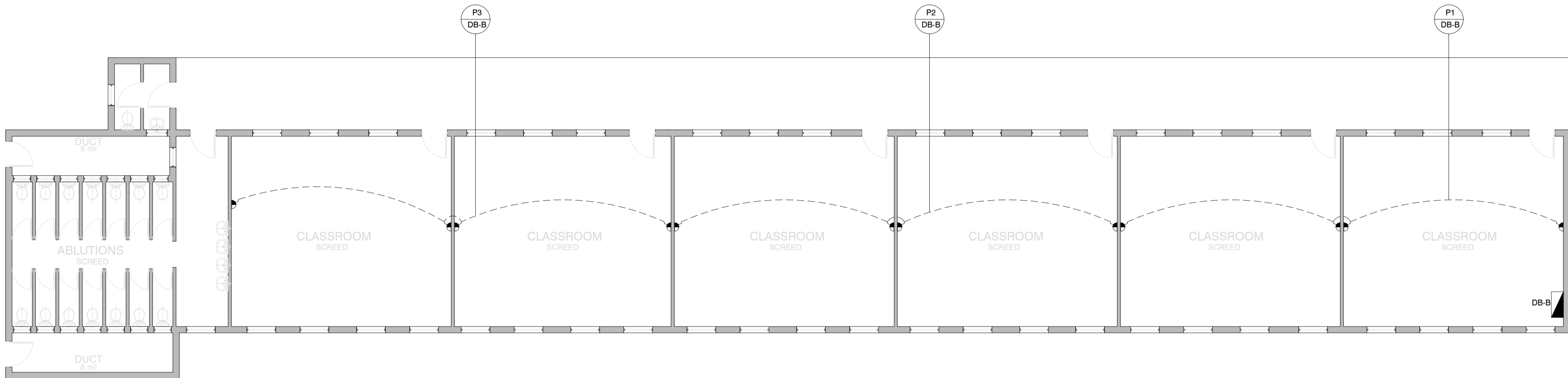
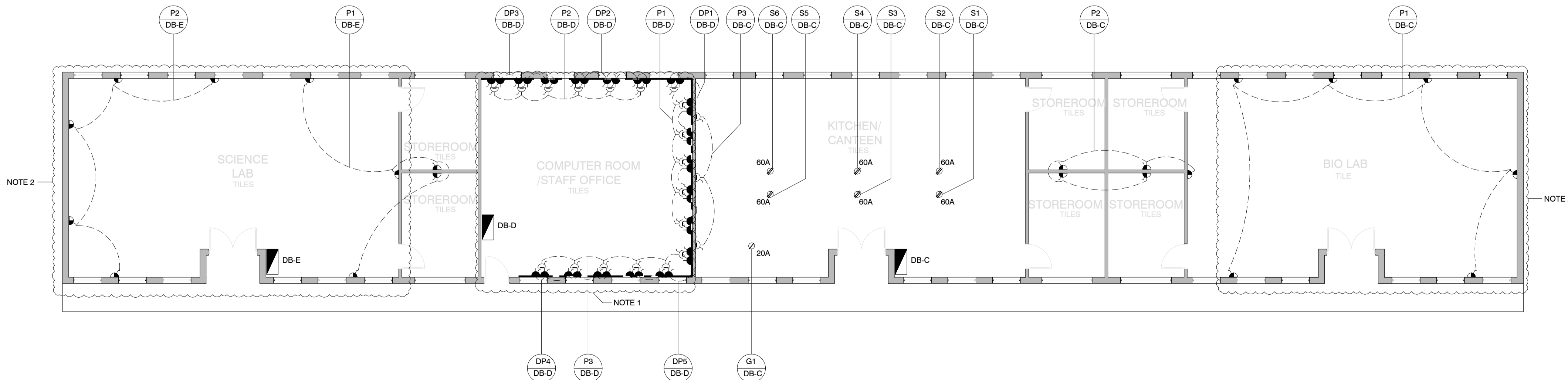


CLASSROOM BLOCK A
SCALE 1 : 100



CLASSROOM BLOCK B
SCALE 1 : 100



SCIENCE LAB BLOCK
SCALE 1 : 100

LEGEND:	
	NEW 16amp STANDARD SOCKET 3 PIN SWITCH SOCKET OUTLETS BEARING THE SABS MARK MOUNTED 300mm A.F.F.L. ON POWER SKIRTING. 16amp NORMAL SSC's TO BE WIRED WITH 2 x 4.0mm ² (L+N) PVC WIRE 2.5mm ² BCEW 20amp SP 5kg CB IN DISTRIBUTION BOARD FOR PROTECTION. 20amp SP 5kg CB IN DISTRIBUTION BOARD FOR PROTECTION.
	NEW 16amp STANDARD SOCKET 3 PIN SWITCH SOCKET OUTLETS BEARING THE SABS MARK MOUNTED 300mm A.F.F.L. ON WALL. 16amp NORMAL SSC's TO BE WIRED WITH 2 x 4.0mm ² (L+N) PVC WIRE 2.5mm ² BCEW 20amp SP 5kg CB IN DISTRIBUTION BOARD FOR PROTECTION. 20/25mm PVC CONDUIT IS TO BE INSTALLED TO ALL POINTS ON 100mm x 100mm STEEL DRAW BOX ON WALL. 20amp SP 5kg CB IN DISTRIBUTION BOARD FOR PROTECTION.
	NEW 16amp DEDICATED 3 PIN SWITCH SOCKET OUTLETS BEARING THE SABS MARK - ISOLATED EARTH PIN SHAVED AT 90° CHAMFERED EARTH. 1. 16amp 3 PIN SHAVED SSC's TO BE WIRED WITH 2 x 4.0mm ² (L+N) PVC WIRE & 2.5mm ² PVC GREEN INSULATED EARTH. MOUNTED ON WALL. 2. NO EARTH LEAKAGE FOR THIS CIRCUIT. 3. 20amp SP 5kg CB IN DISTRIBUTION BOARD FOR PROTECTION.
	NEW 16amp DEDICATED 3 PIN SWITCH SOCKET OUTLETS BEARING THE SABS MARK - ISOLATED EARTH PIN SHAVED AT 90° CHAMFERED EARTH. 1. 16amp 3 PIN SHAVED SSC's TO BE WIRED WITH 2 x 4.0mm ² (L+N) PVC WIRE & 2.5mm ² PVC GREEN INSULATED EARTH. MOUNTED ON WALL. 2. NO EARTH LEAKAGE FOR THIS CIRCUIT. 3. 20/25mm PVC CONDUIT IS TO BE INSTALLED TO ALL POINTS ON 100mm x 100mm STEEL DRAW BOX ON WALL. 20amp SP 5kg CB IN DISTRIBUTION BOARD FOR PROTECTION.
	NEW 16amp STANDARD SOCKET 3 PIN, 1x 2 PIN SWITCH SOCKET OUTLETS BEARING THE SABS MARK MOUNTED ON WALL 300mm A.F.F.L. 16amp NORMAL SSC's TO BE WIRED WITH 2 x 4.0mm ² (L+N) PVC WIRE 2.5mm ² BCEW 20amp SP 5kg CB IN DISTRIBUTION BOARD FOR PROTECTION. 20amp SP 5kg CB IN DISTRIBUTION BOARD FOR PROTECTION.
	NEW 16amp STANDARD SOCKET 3 PIN, 1x 2 PIN SWITCH SOCKET OUTLETS BEARING THE SABS MARK MOUNTED ON WALL 300mm A.F.F.L. 16amp NORMAL SSC's TO BE WIRED WITH 2 x 4.0mm ² (L+N) PVC WIRE 2.5mm ² BCEW 20amp SP 5kg CB IN DISTRIBUTION BOARD FOR PROTECTION. 20/25mm PVC CONDUIT IS TO BE INSTALLED TO ALL POINTS ON 100mm x 100mm STEEL DRAW BOX ON WALL. 20amp SP 5kg CB IN DISTRIBUTION BOARD FOR PROTECTION.
	DATA POINT OUTLET
	TELEPHONE POINT OUTLET
	2 TIER COMPARTMENT PVC POWER SKIRTING
	3 POLE, RECESSED MOUNTED ISOLATOR RATRD IP65
	2 POLE, SURFACE MOUNTED ISOLATOR RATRD IP66
	1 POLE, RECESSED MOUNTED ISOLATOR RATRD IP65
	HEAVY DUTY GATE MOTOR
	DISTRIBUTION BOARD MOUNTED 2200mm A.F.F.L. TO TOP OF DISTRIBUTION BOARD
NOTES: 1. POWER SKIRTING MOUNTED AND ALL SOCKETS ON POWER SKIRTING MOUNTED 100mm ABOVE COUNTER TOP. 2. MOUNTED 300mm ABOVE COUNTER TOP.	

NOTES:

REFERENCE DRAWING

NO.	DRAWING NUMBER	DESCRIPTION
1	3005	DB-A AND DB-B SINGLE LINE DIAGRAM
2	3006	DB-C SINGLE LINE DIAGRAM
3	3007	DB-D AND DB-E SINGLE LINE DIAGRAM
4	3011	RETICULATION LAYOUT

REVISION

NO.	DATE	REVISION	REV. BY
1	15/12/2022	ISSUED FOR TENDER	L. MKHIZE

LODEMANN HOLDINGS SIGNATURES

NAME	SIGNATURE	DATE
DESIGNED BY	H. MOOHI	
DRAWN BY	L. MKHIZE	
ENGINEER	S. MBATHA	
PROJECT MANAGER	L. MBATHA	

CLIENT DEPARTMENT SIGNATURES

FACILITY STAMP

FACILITY MANAGER

INFRASTRUCTURE MANAGER

GENERAL MANAGER

Checked by Professional Consultant

Name

Signature

Date

SIGPRO

ENGINEERING AND PROJECT MANAGEMENT

DBSA

Development Bank of Southern Africa

NORTHERN REGION

Project:

KZN DOE INFRASTRUCTURE DEVELOPMENT AND MAINTENANCE PROGRAMME

Drawing Description:

DLAMVUZO HIGH SCHOOL CLASSROOM A, B AND SCIENCE LAB POWER LAYOUT PLAN

Drawn: SIGPRO

Date: 02/11/2022

Scale/s:

1:100 (A1)

Consultant Drawing Number:

1013-017-3002

DBSA Drawing number

500121952

Stamped by Plans Approval Committee